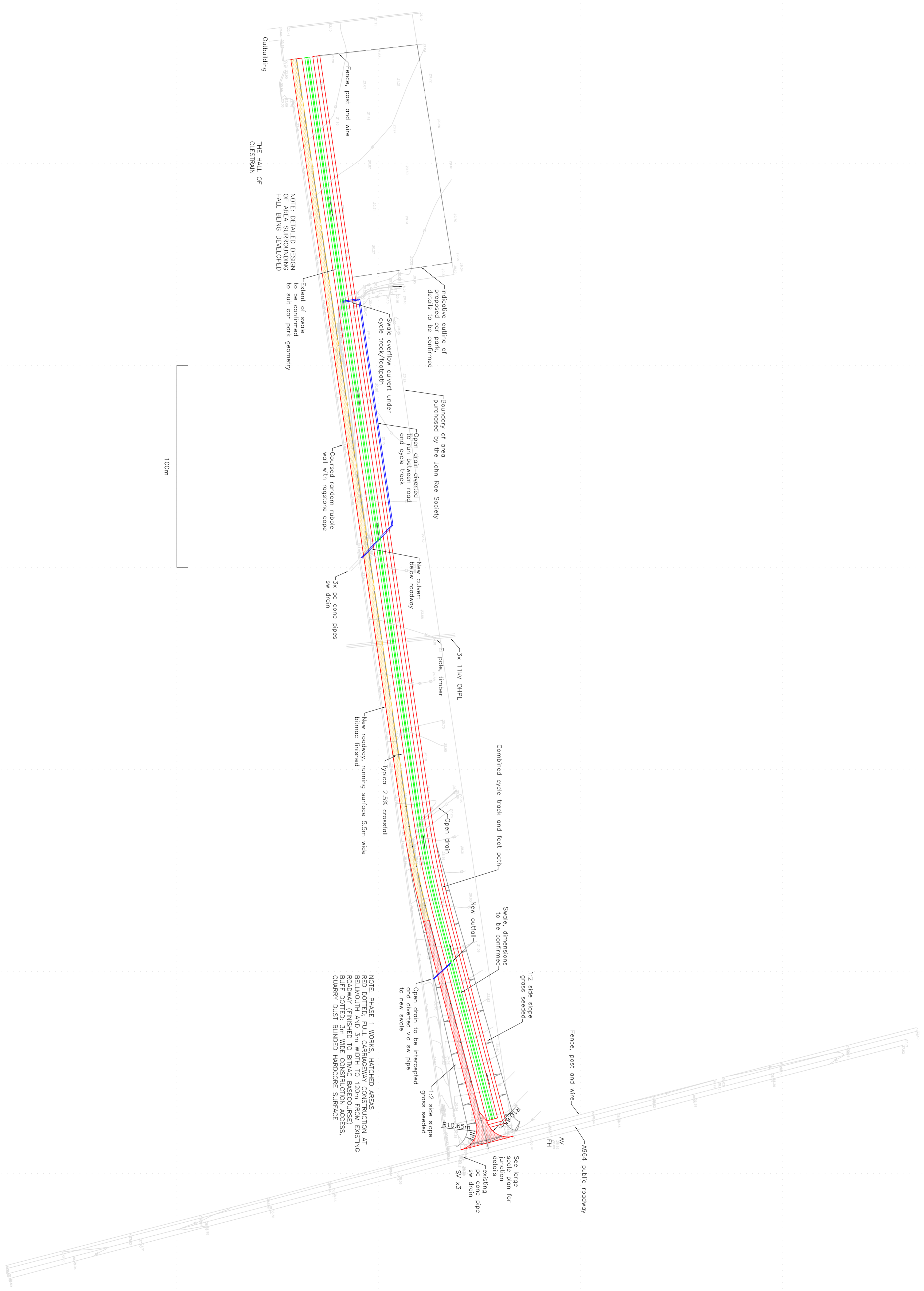


1007200m  
1007800m  
1007900m  
1007500m  
1007600m  
1007400m  
329500m  
329600m  
329700m  
329800m  
329900m  
330000m  
330100m



NOTES  
 1. OSAD 2007\_3D model  
 2. Linear units: metre  
 3. Horizontal datum: ETRS89  
 4. Vertical datum: OSBM15  
 5. Horizontal transformation: OSTN15  
 6. Vertical transformation: OSVM15  
 7. Projection: OSGB36  
 8. Units: Metres  
 9. Heights are shown above Ordnance Datum Newlyn (Orkney Islands) otherwise or shown in pale blue, which are above ground points.  
 10. The grid on this plan is the Ordnance Survey National Grid OSGB36  
 11. Distances on this plan are grid distances, apply the appropriate combined scale projection factor to obtain ground distances.  
 12. Surveyed 190120 and 200120

Rev	Date	Description	By	Chk
B	28/02/20	Scale/Title, data amended	KC	-
A	27/02/20	Swale/pipe detail amended	KC	-
		Finishing details added	KC	-

**SURVEY AND CAD SERVICES**  
 KARL COOPER, SPRINGFIELD, HOLM, ORKNEY, KW17 2SD  
 Tel: 01856 861418  
 Email: kcooper@surveysk.com  
 Website: www.surveysk.com  
 Project: New access to Orphir  
 Client: The John Roe Society

Description: GENERAL ARRANGEMENT PLAN  
 Scales: 1:1000 Date: 12/06/20  
 Drawn: KC Checked: -  
 Drawing number: 780/3 Rev: C  
 Issue: To client by email 12/06/20  
 Filename/Path: G/Clestrain Ho JRS  
 Drawing size: A1 840 x 594